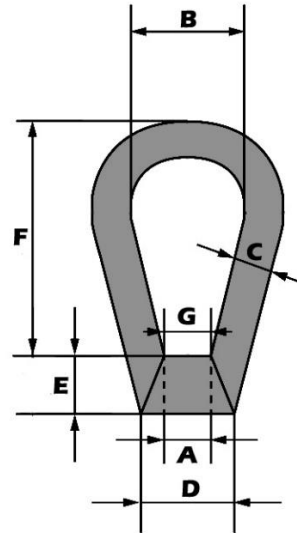


## Bownuts to BS3974 Part 1 (1974) Specification Sheet



- \* Available in Zinc Plated

A (mm)	B (mm)	C (mm)	D (mm)	E (mm)	F (mm)	G (mm)	SWL Tonne	Weight (kgs)	Product Code
6	25	10	32	32	38	18	0.07	0.13	BOW06
8	25	10	32	32	38	18	0.23	0.20	BOW08
10	25	10	32	32	38	18	0.36	0.20	BOW10
12	30	12	38	38	43	20	0.53	0.30	BOW12
16	30	12	38	38	43	20	1.01	0.30	BOW16
20	40	14	45	45	63	25	1.58	0.60	BOW20
22	40	17	45	45	63	25	1.60	0.61	BOW22
24	50	17	50	50	79	30	2.28	0.90	BOW24
30	75	26	70	70	82	46	3.65	2.40	BOW30
36	75	26	70	70	82	46	5.34	2.40	BOW36