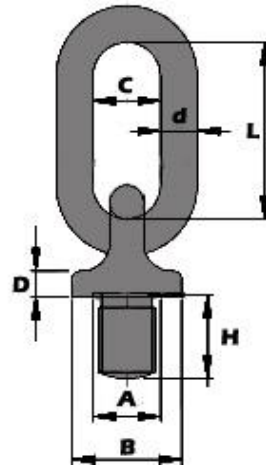




Eyebolt with Link to BS4278 Part 2 1984 (Tested and Certified) Specification Sheet



- * NOT TO STANDARD
- Safe Working Load based on Vertical Lift

A (mm)	B (mm)	C (mm)	d (mm)	D (mm)	H (mm)	L (mm)	SWL Tonne	Weight (kgs)	Product Code
12	39	24	13	9	27	53	0.2	0.4	LEB12*
16	39	24	13	9	27	53	0.4	0.4	LEB16*
20	39	24	13	9	27	53	1.0	0.5	LEB20
24	47	29	15	11	32	63	1.6	0.8	LEB24
30	60	37	19	14	41	80	2.5	1.5	LEB30
36	75	46	24	17	52	102	4.0	3.0	LEB36